

## CHECKWEIGHERS

# PW/12

For a Wide Range of Flexible or Rigid Packages and Containers



All-Fill's model PW-12 power weigh table is a reliable and accurate checkweighing solution for flexible or rigid packages and containers. Operating at speeds up to 250 packages per minute, the PW-12 can achieve accuracies of  $\pm 0.5g$  depending on the application. It features a precision digital load cell and is our most popular unit due to its versatility. All-Fill PW-12 Checkweighers are ideal for accurately weighing packages and containers of up to 8 lbs, 14 inches in length, and 10 inches in width.

Pouches exiting a Form Fill and Seal machine are often contorted, an All-Fill PW-12 with optional infeed and outfeed conveyors will ensure proper spacing to accurately weigh all packages and reject any that are "out of spec." A variety of communication choices are available for providing weight correction feedback to the filler to enhance filling accuracy. All weighing operations are controlled by the All-Fill PW-12's flexible CW700 digital control system, which

is easy to integrate with data networks. The system features a user-friendly, graphical touchscreen and a simplified menu selection structure for all operating functions. There are up to 100-300 different setups that can be entered for each size, weight, container, or package. An exclusive automatic calibration feature determines relevant operating parameters for optimum accuracy and checkweighing efficiency. For at-a-glance updates, the All-Fill PW-12 features a large character weight display and easy-to-see tower lights.

Everything about the All-Fill PW-12 is made for reliable operation even in the harshest industrial environments. A compact, rugged frame enables easy installation in tight production spaces and with an existing filling line. The use of a digital load cell eliminates environmental interference.

### FEEDBACK CAPABILITIES:

As an option, All-Fill Checkweighers can be equipped to provide feedback signals to different equipment in order to correct weights to a desired target weight. The touch-screen control panel software includes an easy to use screen to set and control feedback parameters such as:

- Feedback Control
- Dead band Range
- Feedback Limit
- Percent of Adjustment
- Feedback Ignores
- Feedback Samples

An additional feedback status screen displays relevant feedback data including:

- Package Weight
- Feedback Range
- Ignored Packs
- Feedback Samples
- Average Feedback Weight
- Average Deviation Weight
- Feedback Raise/Lower Status
- Feedback Pulses
- Feedback On/Off Control

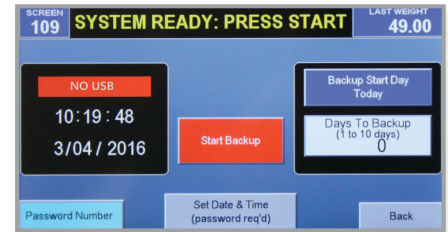
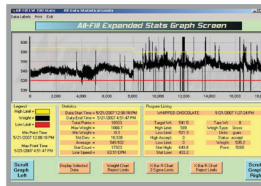
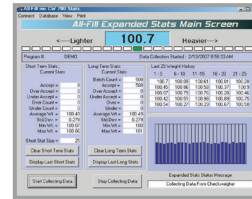
## DATA SOFTWARE PACKAGES

All-Fill Checkweighers provide three different data software packages that range in function. The data output package records the weight and package data detected by the All-Fill Checkweighers. All relevant package data is recorded, including:

- Date and Time
- Weighing Time
- Setup Recipe Number

- Product Name
- Target Weight
- Last Weight
- High/Low/Accept Status

**Data Capture:** Data is sent to a an ethernet connection or RS-232 connection. The software installs easily on most standard configuration PC's and is exported in a Comma Separated Values (.csv) document.



Shown here are images from our software package, displaying a variety of statistics to make sure your packaging process is running efficiently and maximizing your production.

## SPECIFICATION SUMMARY:

<b>Line Speeds:</b>	Up to 250 packs per minute
<b>Accuracy:</b>	+/- 0.5 g depending on application
<b>Package Weights:</b>	Up to 8 lbs. per package
<b>Maximum Package Dimensions:</b>	14" (305 mm) long by 10" (203 mm) wide; other sizes available
<b>Construction:</b>	Stainless steel and anodized aluminum (standard)
<b>Direction of Travel:</b>	Left to right or right to left
<b>Conveyor Belts:</b>	8" wide x 12" long, 12" wide x 18" long, and custom
<b>Weight Indicator:</b>	3 light tower (standard), 5 light tower (optional), others
<b>Controls:</b>	Standard 10" touch screen HMI with embedded controller 100 program memory
<b>Control Mounting:</b>	Rear-mounted control box (standard) front-mounted, pedestal, and rotated 180° (optional)
<b>Data Output:</b>	RS-232, ethernet, or USB
<b>Reject Devices:</b>	Pusher, stop belt, or signal (only), sweeper, bopper, diverter
<b>Reject Location:</b>	Outfeed conveyor or remote
<b>Reject Direction:</b>	Front, rear, or special
<b>Electrical Requirements:</b>	110V single phase, 60 HZ
<b>Pneumatic Requirements:</b>	80 PSI / 4 SCFM
<b>Options:</b>	Special construction; explosion-proof, wash down, and more, container transfer: roller or dead plate, guide rails, timing screws, side belts
<b>Feedback:</b>	Contact closure, digital, single/dual head filler, or custom, reject horn alarm

## WORLD-CLASS SERVICE & SUPPORT:

We understand downtime and its effect on your bottom line. Packaging machinery is only as strong as its service and support system. If you run into challenges, All-Fill's Service team consists of 15 full time service employees with over 150 years of combined experience in the packaging industry. Our team can train, install, and troubleshoot any All-Fill machinery. We service domestically and in our international territories: Canada, Central and South America, India, China and Australia. Contact our Service team at [Service@all-fill.com](mailto:Service@all-fill.com).

## PARTS SUPPORT:

All-Fill machines are designed using the most innovative controls and the highest quality parts and components. All-Fill has an unmatched ability to identify and resolve issues that may arise with your machine. Our parts department provides quality support in a timely manner to reduce your downtime and stocks most parts for quick delivery. From mechanical assemblies, electronic components, tooling, machine accessories and software, we have the parts you need. Contact our Parts Department at [AFI-parts@all-fill.com](mailto:AFI-parts@all-fill.com).

## INTERNATIONAL INQUIRIES:

All-Fill's packaging machinery is available worldwide for almost any product and industry. Our more than 50 years of engineering expertise combined with our industry leading field support makes us a leader in the industry. We design, manufacture, install and service machinery with maximum accuracy and reliability. Our global presence means uncompromising service and support, no matter what or where your needs are. Reach out today to discuss your project with our international sales team. Contact us at [info@all-fill.com](mailto:info@all-fill.com).